

Installing Curator Tool 1.9.6.41 (or later versions)



Revision Date

March 24, 2017



This document describes the installation of the Curator Tool (CT) in the US National Plant Germplasm System (NPGS). The text is essentially applicable to other CT installations – however the source for the installation file and the server information will vary, depending on the organization.

Please refer to the [Curator Tool User Guide](#) for complete Curator Tool information (other than the installation instructions). Refer to the [Curator Tool User Guide](#) to read about the changes in the recent version levels.

If you have a version of the CT that is 1.8.4 or earlier, you need to manually uninstall the old version before installing the new. See the [Uninstalling the Existing CT section](#) for details. [Change notes](#) pertaining to this document are summarized in the appendix. The [Table of Contents](#) contains links to the document's sections.

In the NPGS, if you are the person installing the CT and you do not have Windows extended administrative privileges for your PC, **stop here** and get someone who does have privileges to continue with the installation. Be sure to read the [CT Installation Issues](#) before proceeding.

Table of Contents

Curator Tool Installation Issues	3
(A) Existing PC with the Curator Tool <i>Previously Installed</i>	3
(B) New PC (or an existing PC with <i>no previous</i> Curator Tool installation)	4
Overview	5
Installation Steps	6
Directions for Installing the Self-extracting Curator Tool	7
Download the Zip File	7
Crystal Reports Installation	12
Microsoft SQL Server Express	13
Connect the CT to the Correct Server	18
Change Password	19
NPGS Password Guidelines	20
Update Lookup Tables	20
Uninstalling the Existing CT	22
Default:	25

Curator Tool Installation Issues

With the move to the USDA Enterprise Active Directory (EAD) /ARSNNet network and the increased security requirements, many ARS users who formerly had administrative privileges on their PC no longer have them. However, they may have been given an “RS elevated privilege account.” Even users who previously did not have administrative privileges may be affected by this recent change because they are now considered to be different users (because they now have new security user accounts). This change had an indirect impact on the Curator Tool.

So how does this security move impact the Curator Tool? The simplest answer is, “it depends.” Detailed below are two scenarios. For each scenario, let’s label the person installing the CT the “admin.” (A standard PC user who does not have the elevated Windows administrative privileges cannot serve as the admin. At a minimum, this admin must have “elevated privileges.”)



If your PC is under the new security (EAD) environment, follow the directions as described in (A). If the PC hasn’t been migrated yet to the new security environment, complete (B) only.

Two accounts will be needed to complete all of the steps. An elevated Windows privileges account is needed (for logging onto the PC), as well as an active Curator Tool User account. This does not mean that the CT user needs to have the elevated privileges account.

(A) Existing PC with the Curator Tool Previously Installed

The “cleanest” solution is to **completely** uninstall the Curator Tool and Microsoft SQL Server Express (steps 1,2 & 3 below (alternatively you could try steps 5–7 first, using the **elevated privileges account**). To install the CT and establish appropriate write permissions on folders used by the CT, continue with steps (4-7) described in (B) below.

1. Login to Enterprise Active Directory (EAD) on the Windows PC using an **elevated privileges account** which has administrative privileges. This would be a USDA account in the format *RS.fname.lname*.
2. Use the Windows uninstall function (in Control Panel Programs & Features) to **uninstall** the **Curator Tool** program.
3. Uninstall the related **SQLEXPRESS** folder(s). A typical name for that folder is
C:\Program Files\Microsoft SQL Server\MSSQL10_50.SQLEXPRESS\MSSQL\Data

If you examine your folders and still see any MSSQL10_XXX.SQLEXPRESS folders, consider renaming them (at least temporarily while you complete the next steps below.) Reboot and log back in **using the RS elevated privilege account**.

Continue with steps 4-7 below.

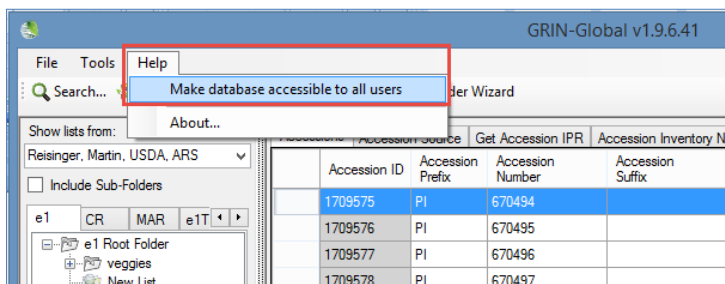
(B) New PC (or an existing PC with no *previous* Curator Tool installation)

Assuming that only a person with the Windows *elevated* privileges will be installing the CT, this is fairly straightforward. Login to Enterprise Active Directory (EAD) on the Windows PC using an ***elevated privileges account*** which has certain Windows administrative privileges. This USDA account would be in the format *RS.fname.lname*.

4. Using an ***elevated privileges account***, install the Curator Tool, following the CT installation directions below. During this installation, not only is the CT installed, but other requisite programs are installed, including Microsoft's SQL Server Express. "Express" is the underlying database engine which will host some data created by the user on his or her local PC. The actual curatorial data is stored on the remote GG server – for example, the NPGS server is in Beltsville.

Three additional steps need to be followed *after successfully installing the CT*:

5. Reboot. Log in, still using the ***RS elevated privileges account***. Still under that same elevated account, launch the GRIN-Global Curator Tool (CT) – however, the person with the RS elevated Windows account in many cases will not have a CT account. In order to launch the CT, use a valid GRIN-Global user account. After the CT window displays, select **Help | Make database accessible to all users**

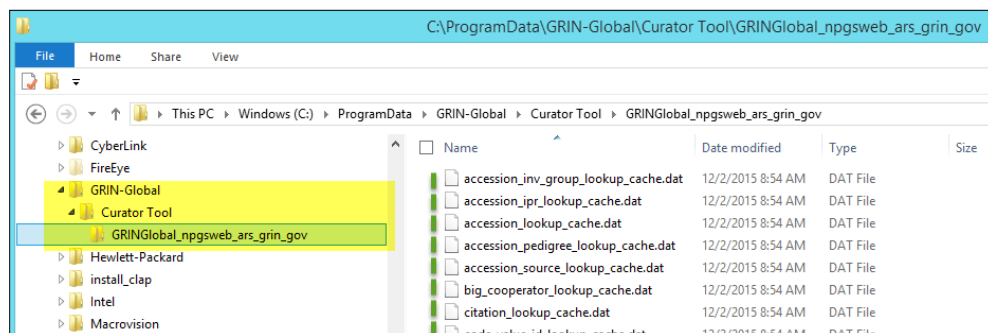


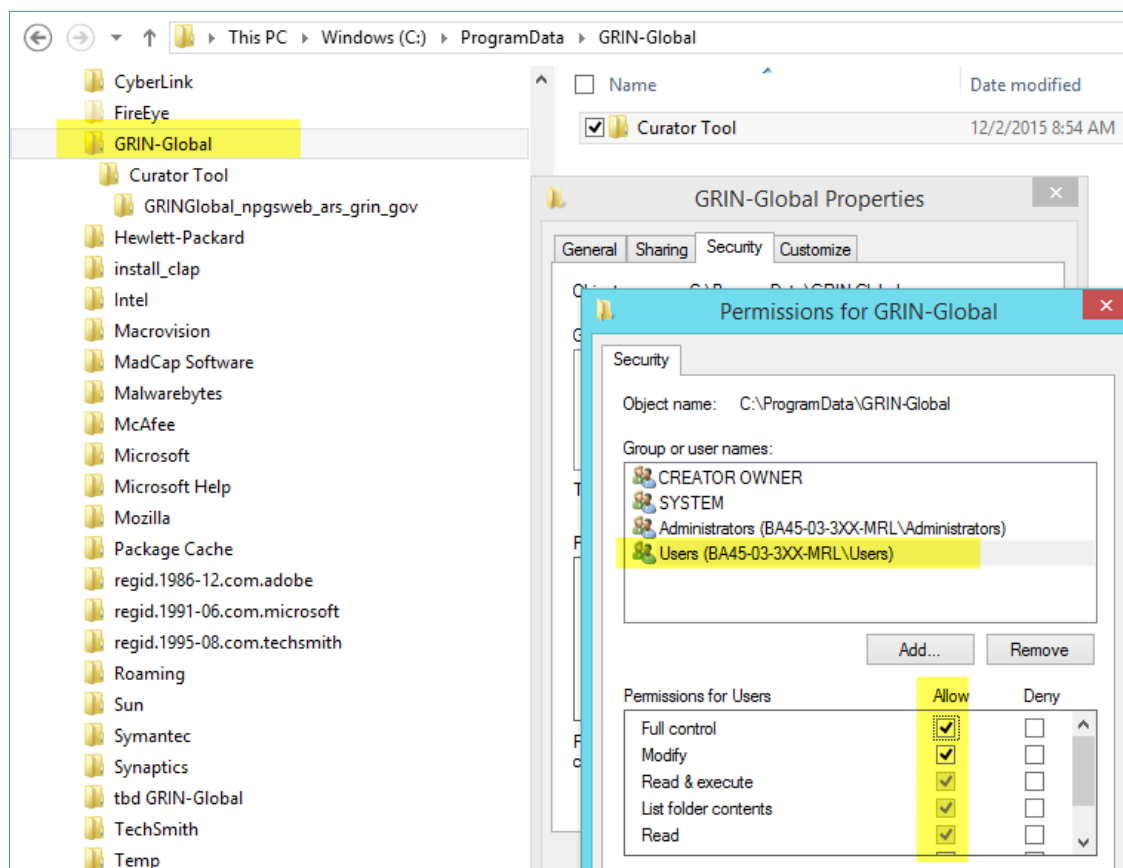
6. Still logged in Windows with the ***same elevated privileges account (the person who installed the CT)***, change the security privileges for a specific folder (**C:\ProgramData\GRIN-Global**) In Windows Explorer ("File Explorer" in Windows 10), and ensure that folder is modifiable by the **Users** group (as illustrated on the next page).



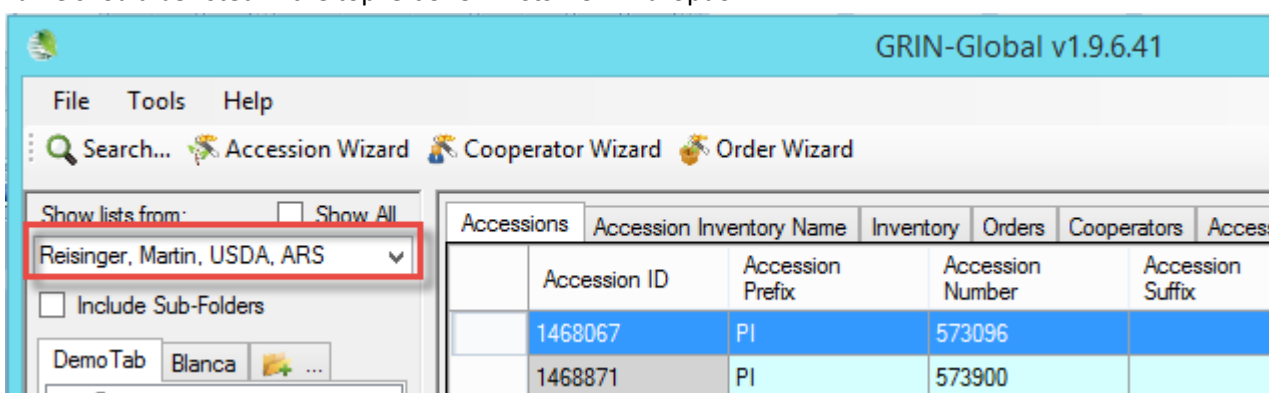
By default, the **C:\ProgramData** folder is hidden by the operating system. If that folder is not displaying when in File Explorer, you need to change the viewing options to display hidden folders and files. See the Appendix "[Changing Viewing Options for Folders](#)" for details.

(This **C:\ProgramData\GRIN-Global** folder and subfolders are created when the CT user *initially* starts running the CT (not when it is installed).)





- That's it. **Reboot**. Have the **Curator Tool** user log into Windows with his/her real Windows/Network ID. That person should then use his or her Curator Tool User account and start up the CT. The user's name should be listed in the top left **Show Lists from...** dropdown.



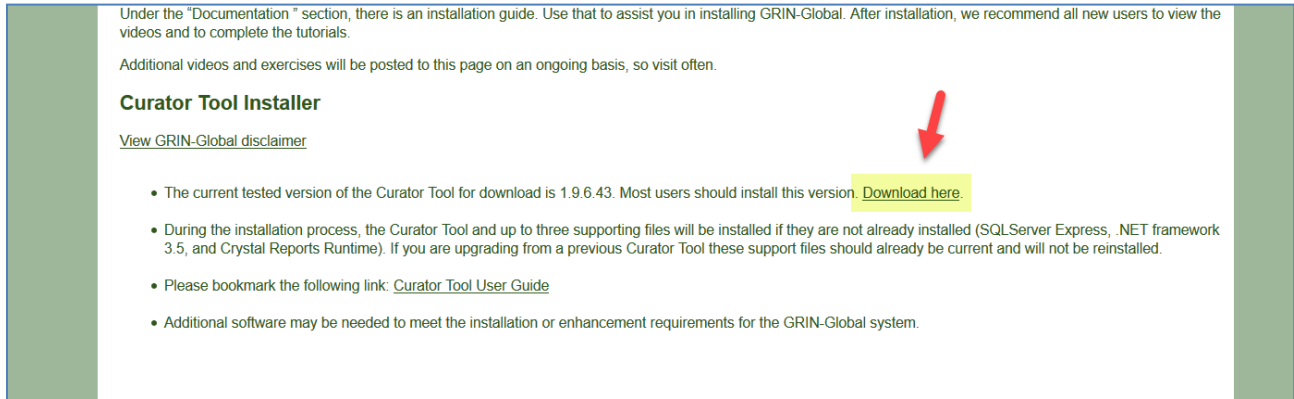
The user's password may have expired if he hasn't used the CT in some time; in that case he should contact Quinn Sinnott, the NPGS GRIN-Global Administrator.

Overview

NPGS sites are using the Curator Tool (CT) version 1.9.6.41 as of November 30, 2015 to access the GRIN-Global database. If the version of the CT on your PC is not 1.9.6.41, then it needs to be updated to that version. Versions 1.8.n or older used the GG Updater for installation. That is no longer the case; a self-extracting zip is now used instead.

New installations (or updates) of the Curator Tool will use a self-extracting zip file available at:

<http://npgsweb.ars-grin.gov/gringlobal/downloads/>



Under the "Documentation" section, there is an installation guide. Use that to assist you in installing GRIN-Global. After installation, we recommend all new users to view the videos and to complete the tutorials.

Additional videos and exercises will be posted to this page on an ongoing basis, so visit often.

Curator Tool Installer

[View GRIN-Global disclaimer](#)

- The current tested version of the Curator Tool for download is 1.9.6.43. Most users should install this version. [Download here.](#)
- During the installation process, the Curator Tool and up to three supporting files will be installed if they are not already installed (SQLServer Express, .NET framework 3.5, and Crystal Reports Runtime). If you are upgrading from a previous Curator Tool these support files should already be current and will not be reinstalled.
- Please bookmark the following link: [Curator Tool User Guide](#)
- Additional software may be needed to meet the installation or enhancement requirements for the GRIN-Global system.

(This screen indicates ...43, but later versions when available will be listed.)



Users with a 1.8.x (or earlier) version of the CT must use Windows to manually remove the Curator Tool from the PC. Use Windows **Control Panel** to remove the previous CT version.

Installation Steps

The CT installation steps vary, depending on whether it is a new CT installation or an update.

Updates

In an update, you basically invoke the self-extracting zip file and the InstallShield wizard program proceeds with a series of windows on which you generally just click the **Next** button. (InstallShield is the program used to pack the CT into this self-extracting file; detailed directions are described below.)

New Installations

When this installation is the first installation of the CT on the PC, besides installing the CT several other programs are installed:

Component	Purpose
Crystal Reports	SAP's Crystal Reports viewer is a free, standalone Report file viewer that enables the user to open and view interactive reports designed for the Curator Tool
SQL Server 2008 R2 Express	Required on all computers where the Curator Tool is installed; the CT maintains a small SQL Server database of lookup tables on the user's PC
Lookup Tables	Every PC running the CT will have a copy of these GG tables installed on the PC.

Directions for Installing the Self-extracting Curator Tool

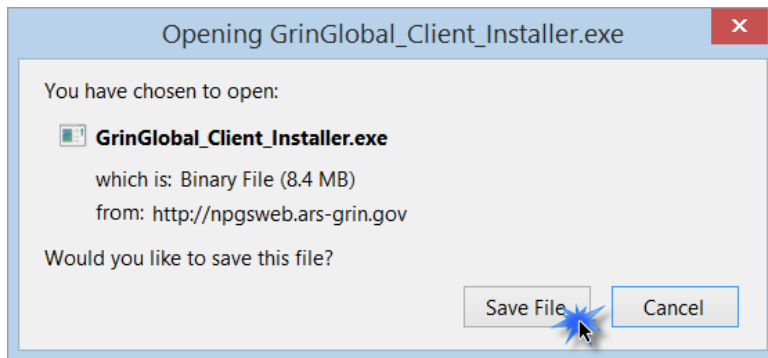
Download the Zip File

Each browser handles downloads slightly differently – the main idea is to save the zip file and then execute it (double-click on the filename within Windows Explorer). Unfortunately you need to determine where the file is downloaded on your PC – each browser and PC operate uniquely.

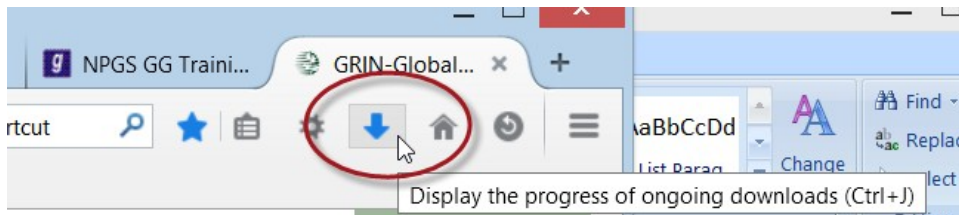
In a URL box in your browser, go to: (or click below if you are reading this document online):

<http://npgsweb.ars-grin.gov/gringlobal/downloads/>

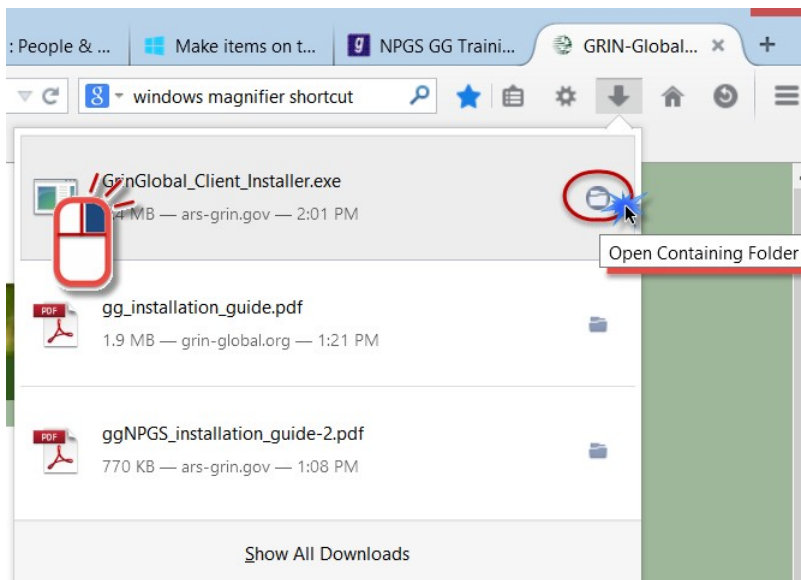
My Firefox browser responded with this screen. Click the **Save File** button:



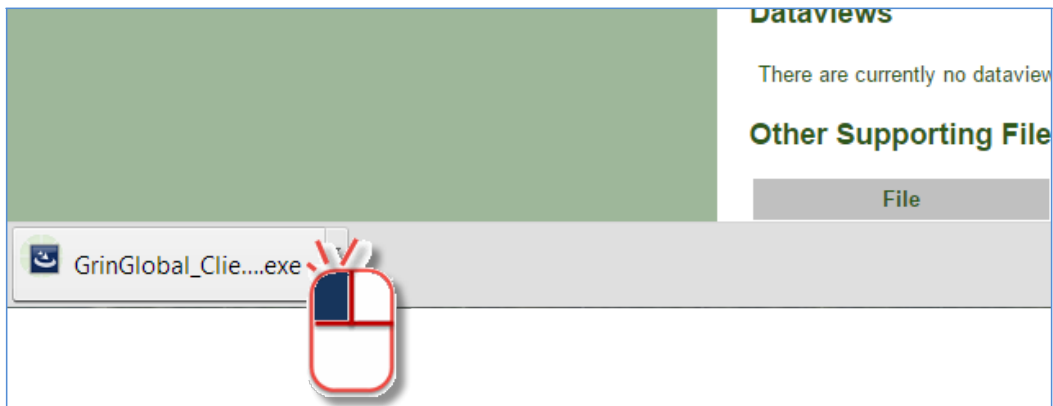
The browser will display some sort of download progress indicator:



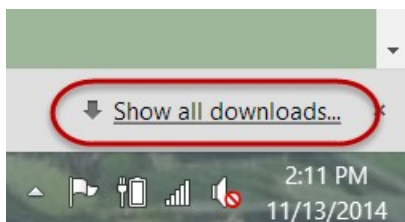
You can determine the location (if you need to), or you can click on the filename:



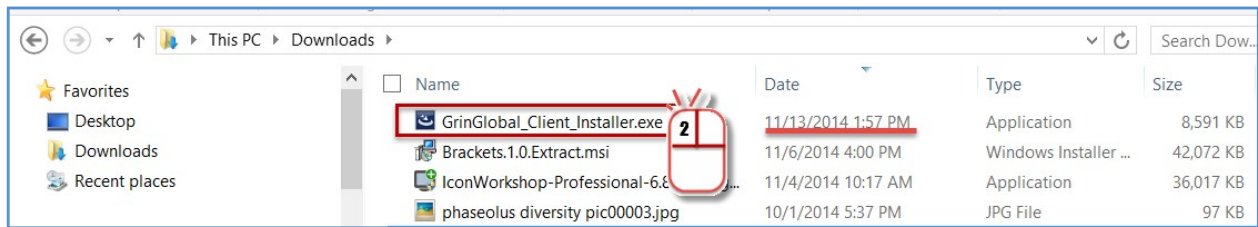
In Chrome, my PC displayed the filename at the bottom left of the screen. Just click on the filename:



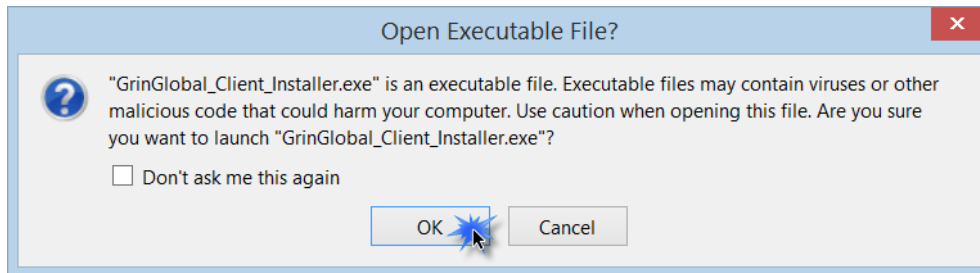
If desired, you can also display the complete list of Chrome downloaded files via Chrome – on the status bar there should be a link:



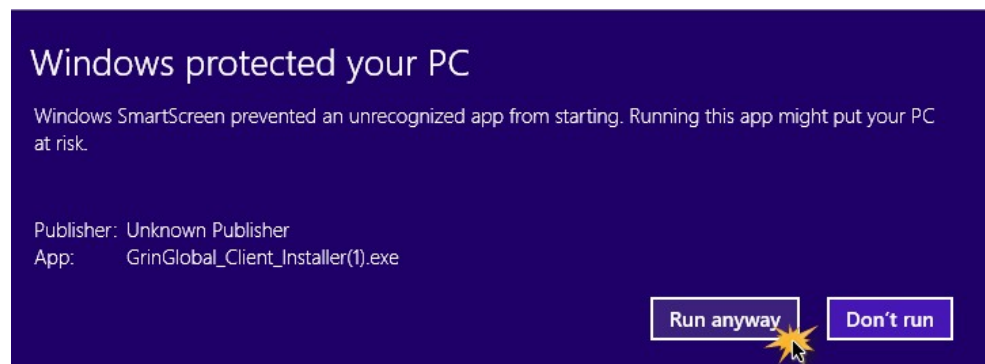
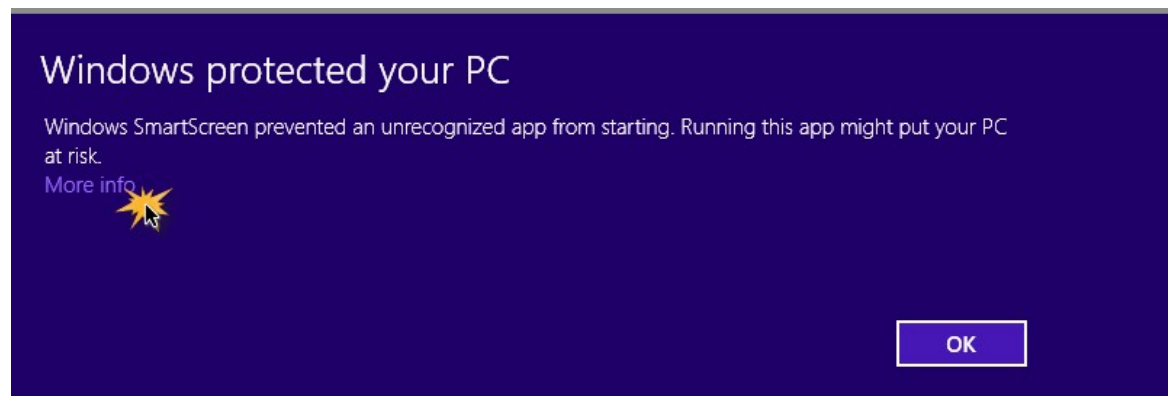
to locate the file in Windows Explorer., after you locate it, double-click the filename to invoke the file:



You most likely will see a warning which can be ignored:



In Windows 8.1, you may also see the following messages. Click on the **More Info** and then the **Run Anyway** links:

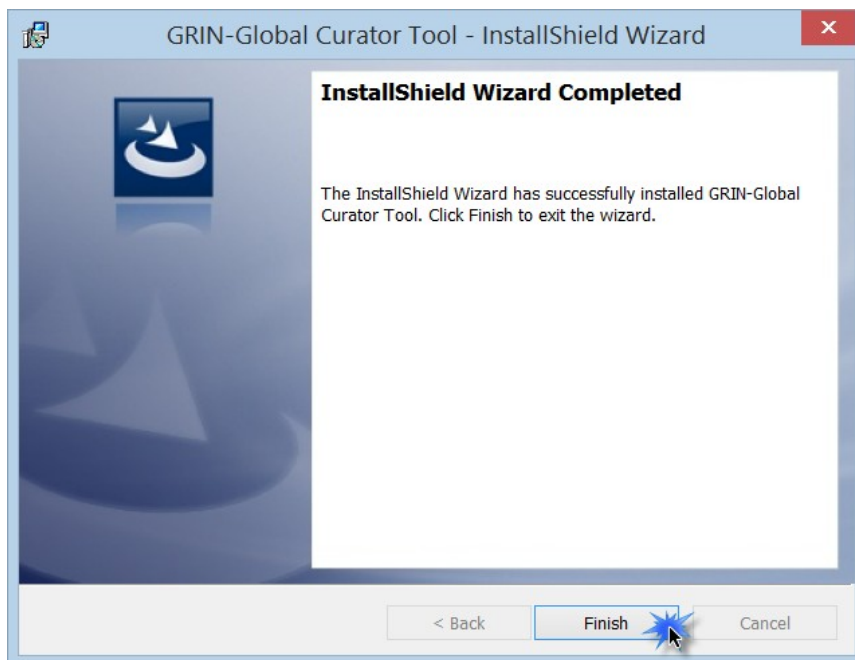
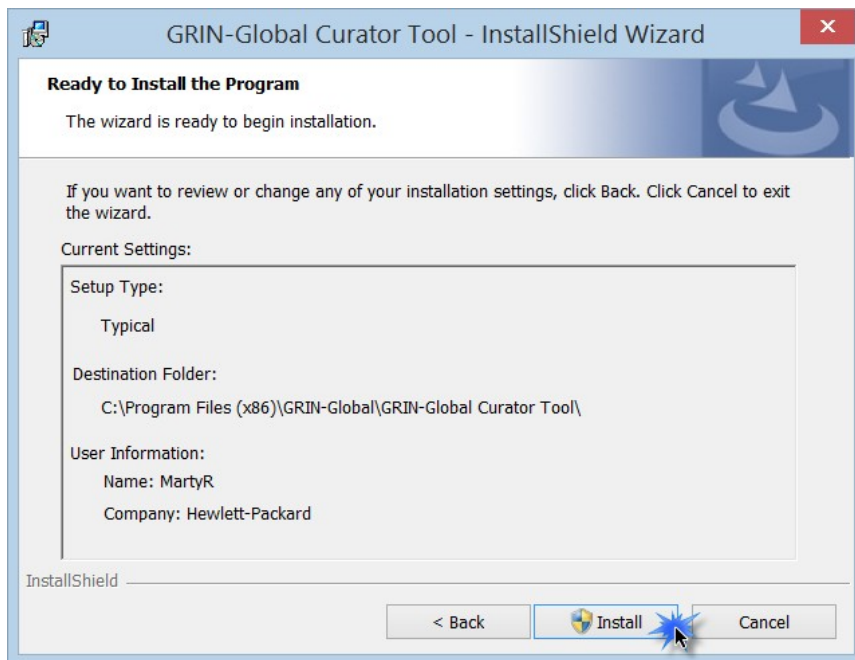


In whichever way you start the **GrinGlobal_Client_Installer.exe** file, it will start running and the initial window will display:

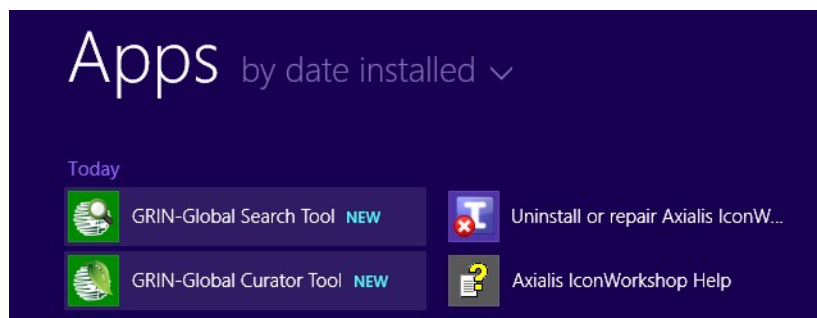


Typically you will continue the process by simply affirming the prompts – usually clicking on a series of **Next >** and other buttons.

Click the **Install** button to proceed:



In Windows 8.1, the icons for the Curator Tool will be added to the Apps list:



You can pin these to your Start screen (or similarly in Windows 7, to your Start menu.)

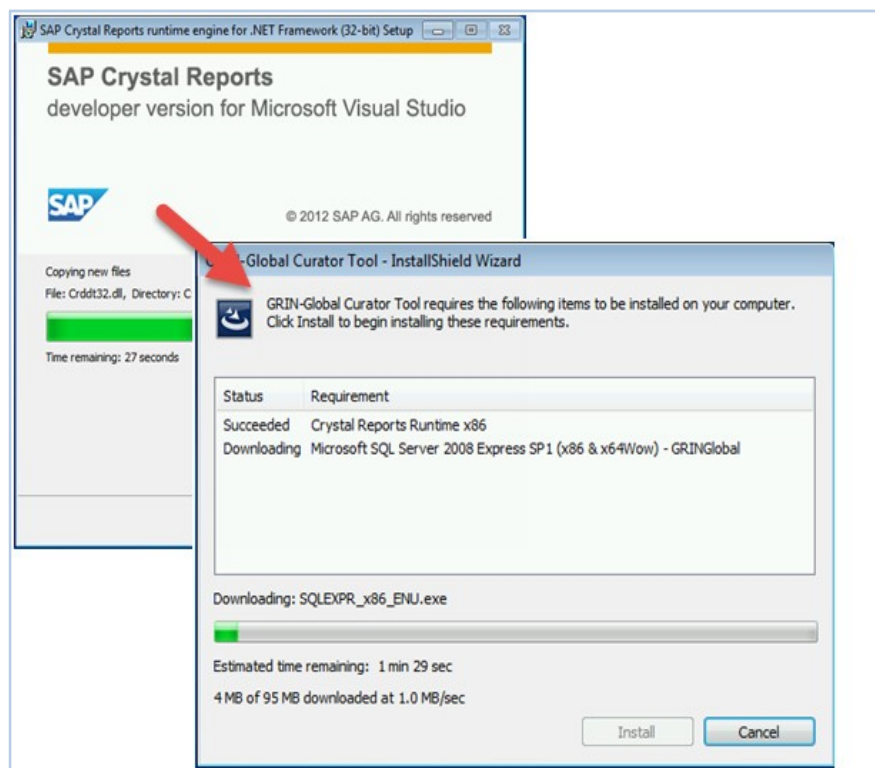
The directions following this page will be needed the first time the Curator Tool is installed on the PC. During the initial installation, not only is the CT installed, but also a copy of the Crystal Reports viewer and Microsoft's SQL Server Express – both are needed to use the CT.

To run the CT, you must connect to a server. Complete directions are included in the Curator Tool User Guide, but also included here in the [Connect the CT to the Correct Server](#) section.

For NPGS, the server is **npgsweb.ars-grin.gov**

Crystal Reports Installation

The CT uses a Crystal Reports viewer to display and print reports. A copy of the CR viewer is installed with the CT; in a CT update, the CR viewer is not reinstalled.

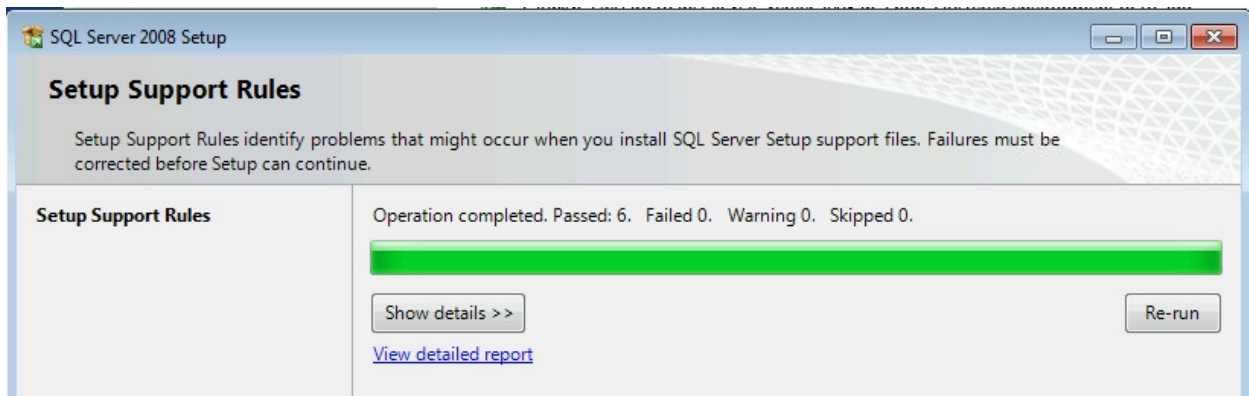
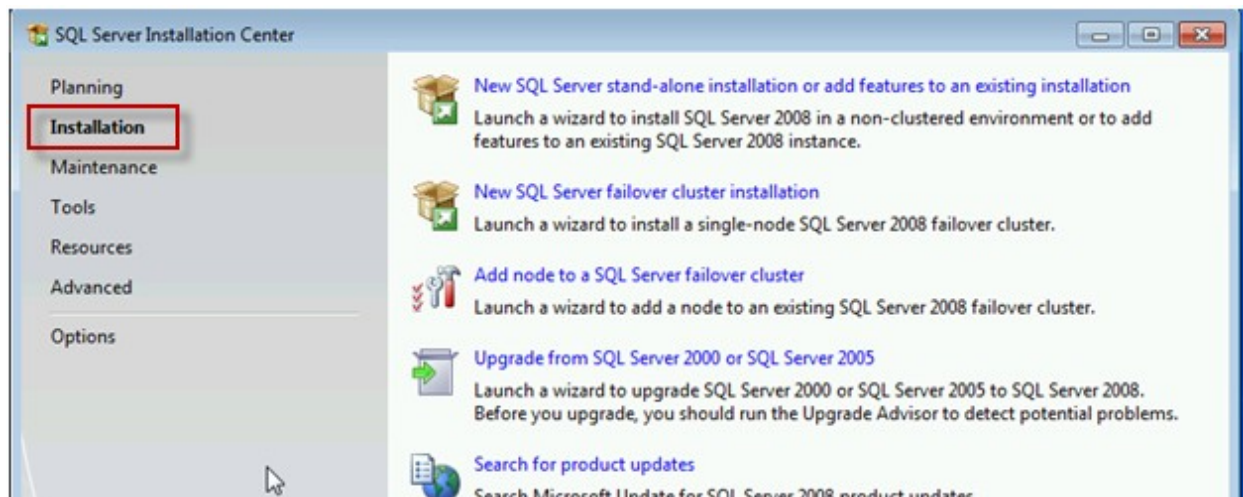


Microsoft SQL Server Express

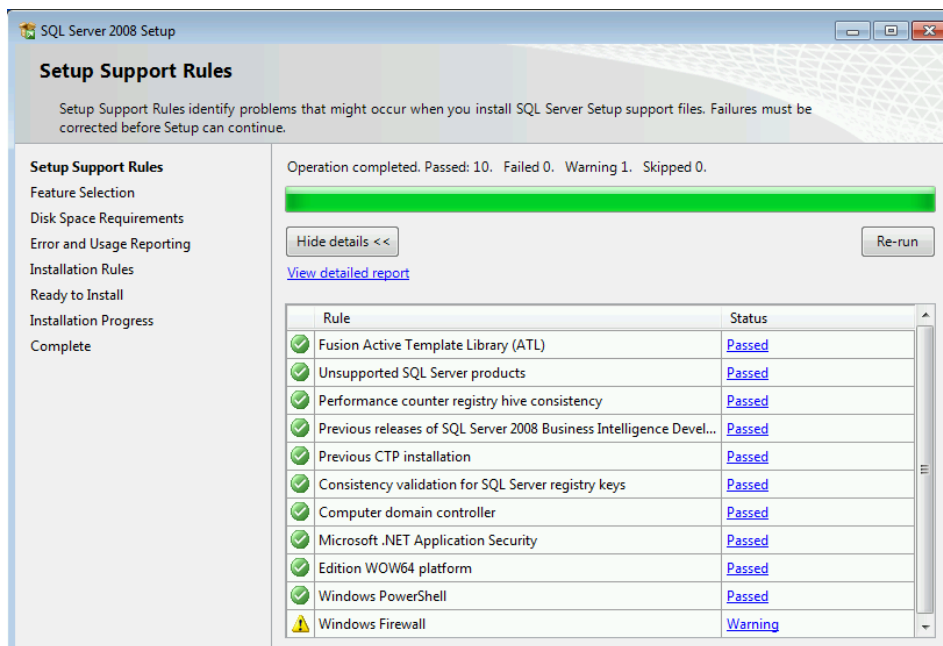
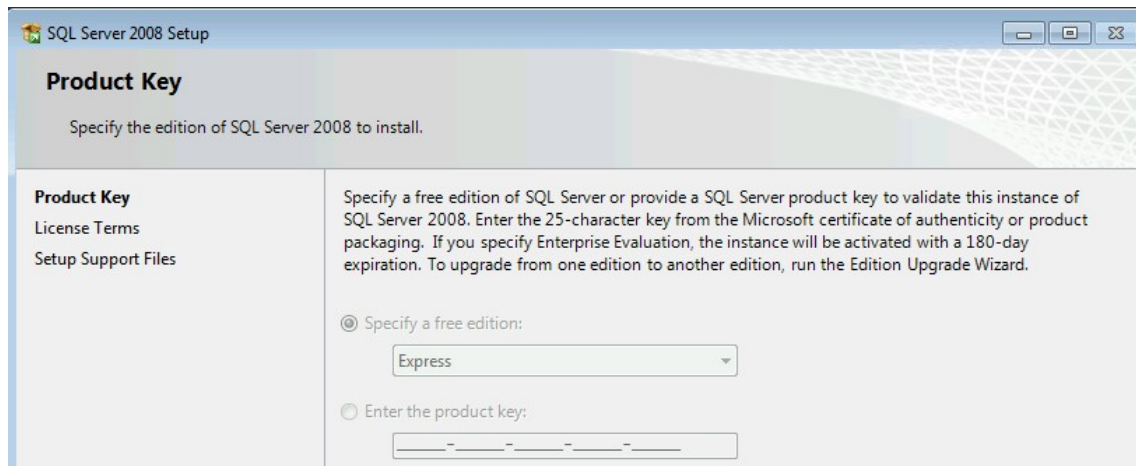
In order for the Curator Tool to operate, a copy of “SQL Server Express” must be installed on the PC. If SQL Server Express is already installed, it doesn’t reinstall – this step is simply bypassed by the CT installation procedure.

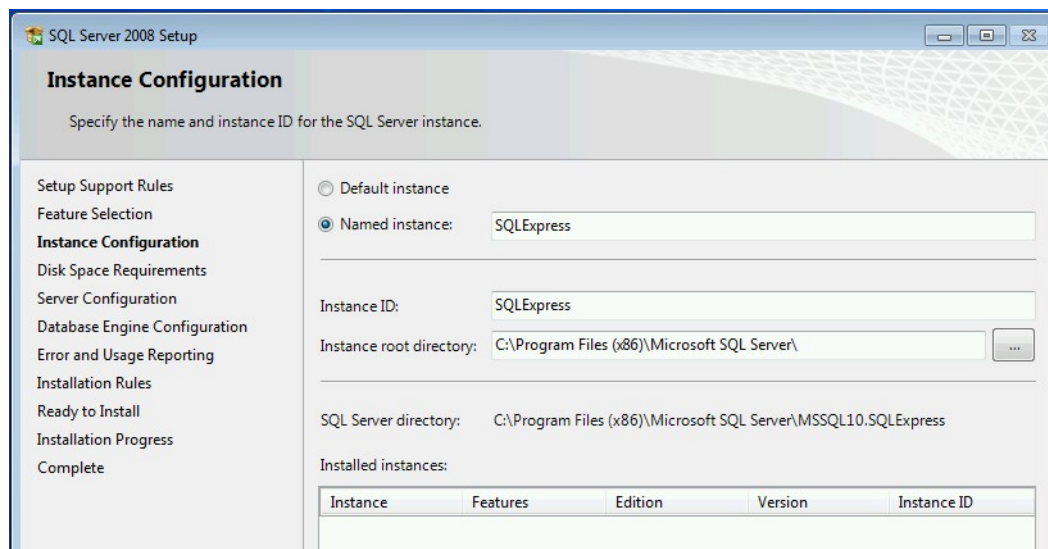
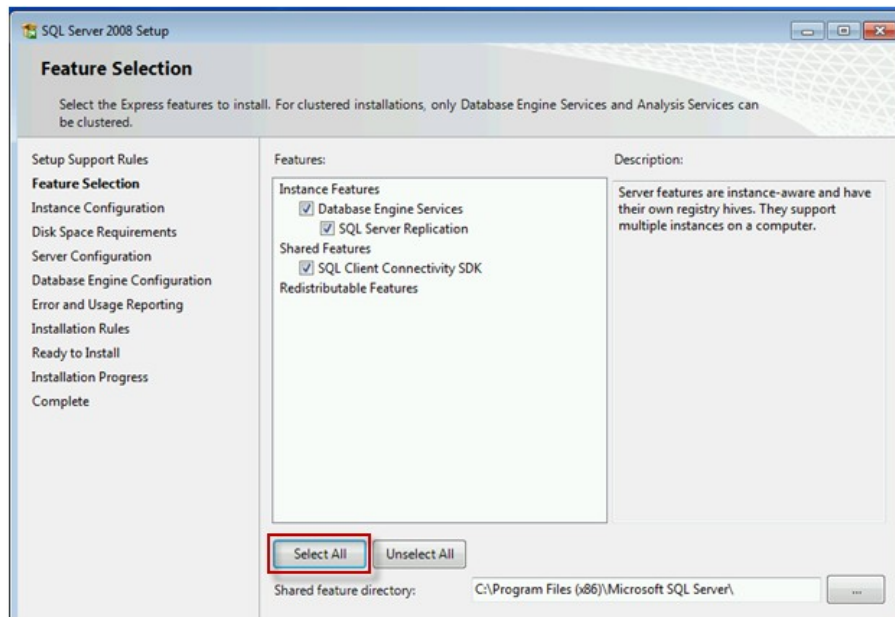
Multiple windows will be displayed during the process – many just require a **Next** button to be clicked. In the following series, all of the **Next** windows are not included; primarily the windows that require something other than selecting **Next** are included here.

Click **Installation**

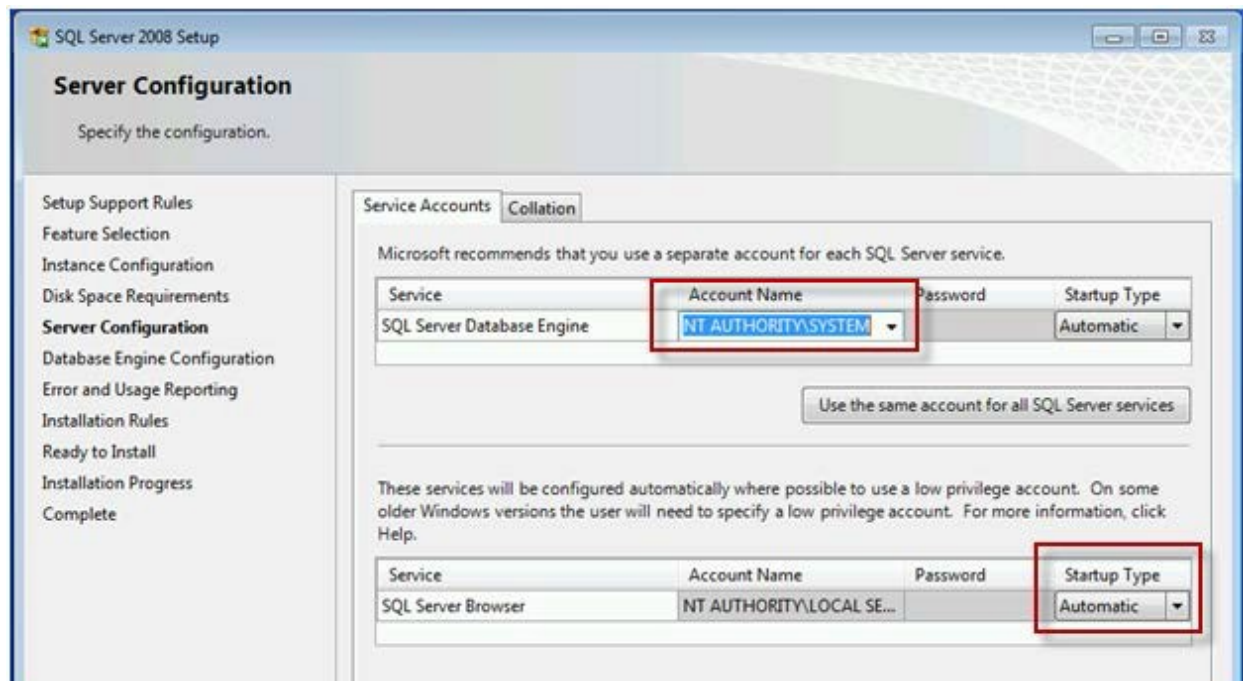


You do not need a Product Key; just click **Next** to continue:

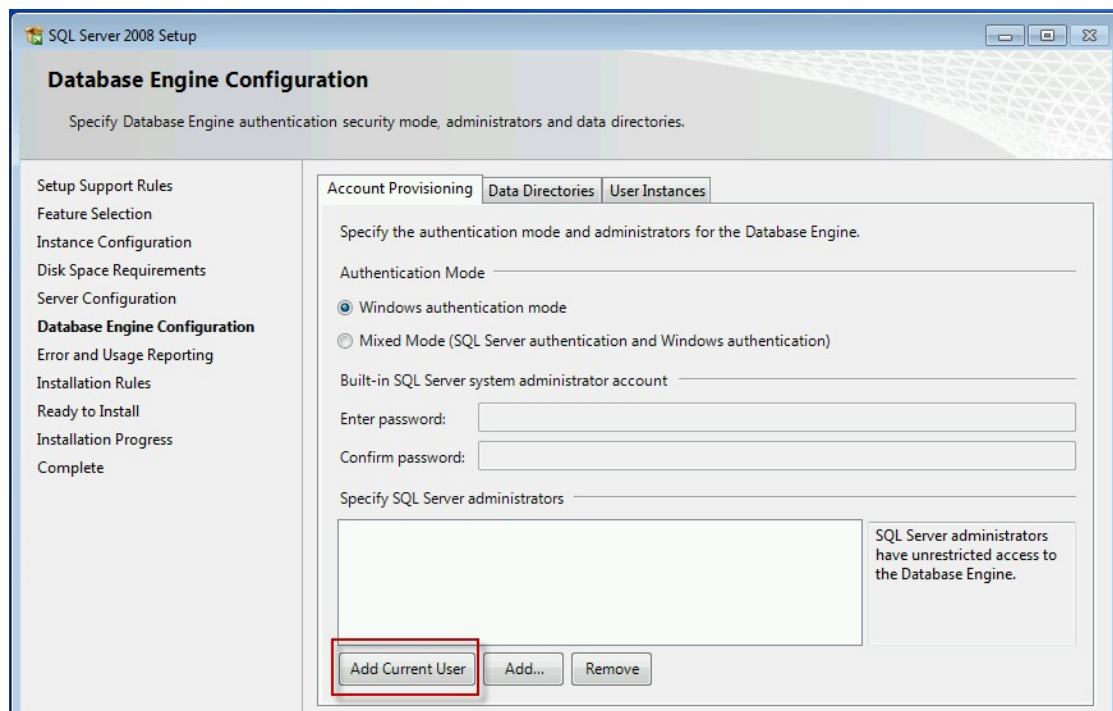




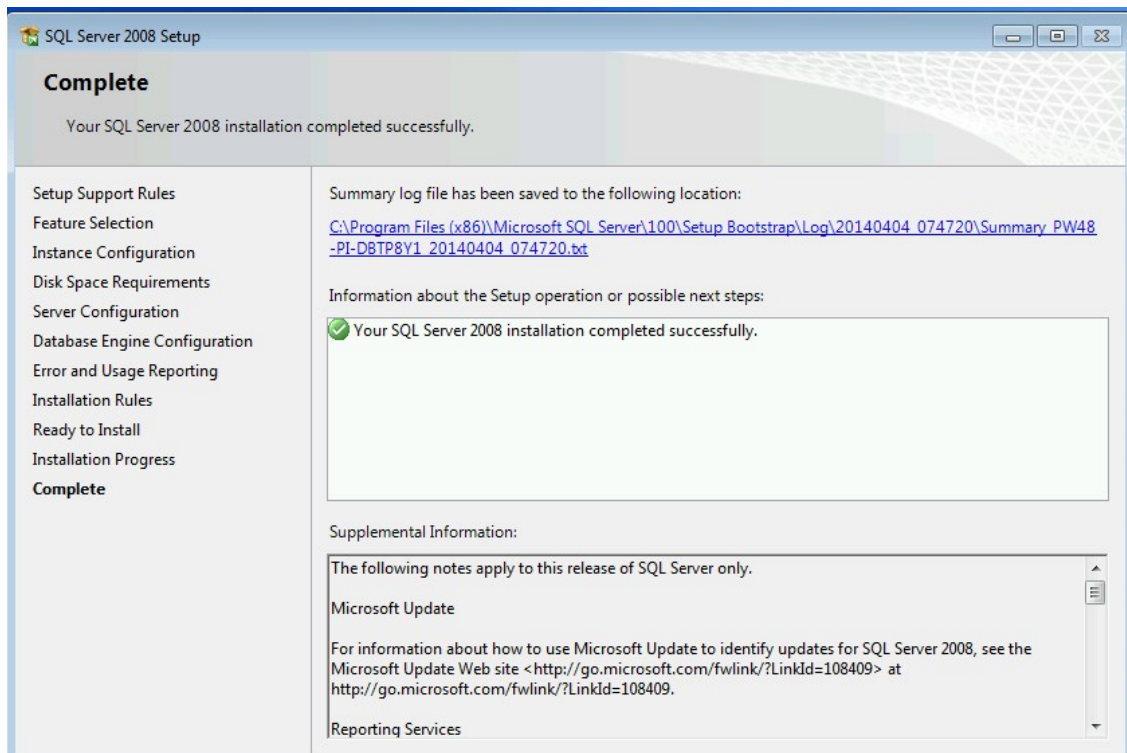
The next two windows may be perhaps the trickiest ones in the series. On the **Server Configuration** window, use the dropdowns and change them to be similar to the following example:



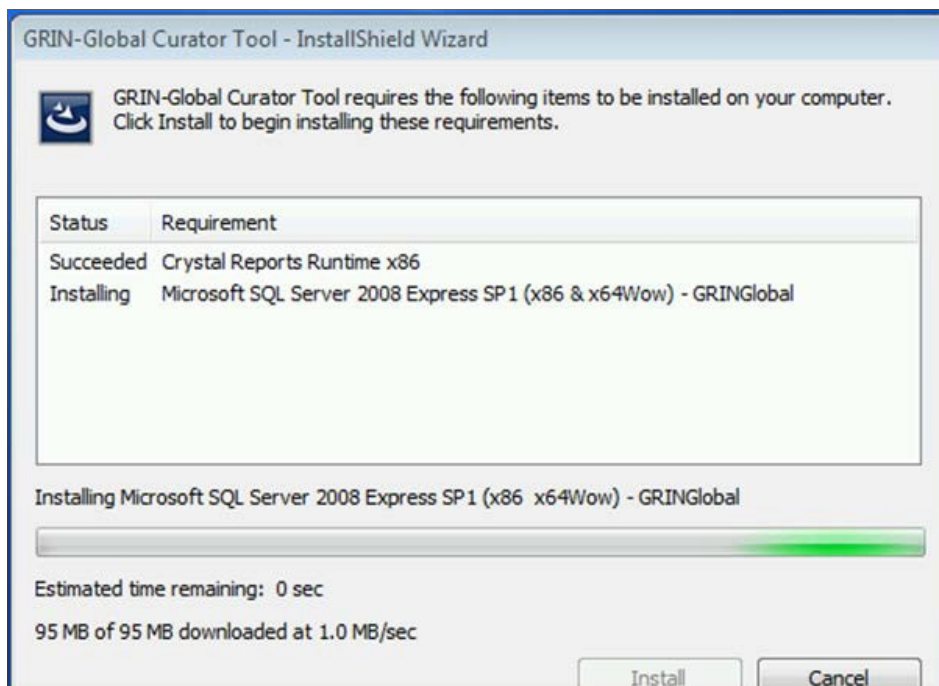
On the **Database Engine Configuration** window, click the **Add Current User** button to proceed:



Several more windows display, and eventually the **Complete** window should display. Use its **Close** button.



If the Crystal Reports window seems to be “stuck,” invoke the Windows Task Manager (Ctrl + Alt + Delete), to end that CR task. In the following example, it appears that the 95 MB was loaded, remaining time is 0, yet the window “sort of stopped” at that point.



Restart the CT zip file, and almost immediately the following window will display:

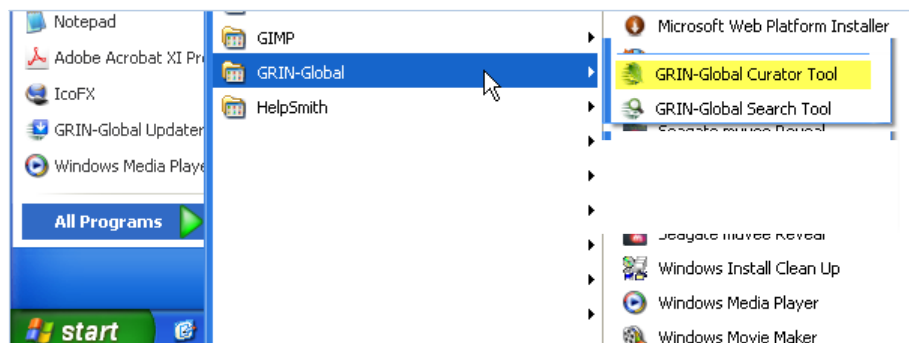


Connect the CT to the Correct Server

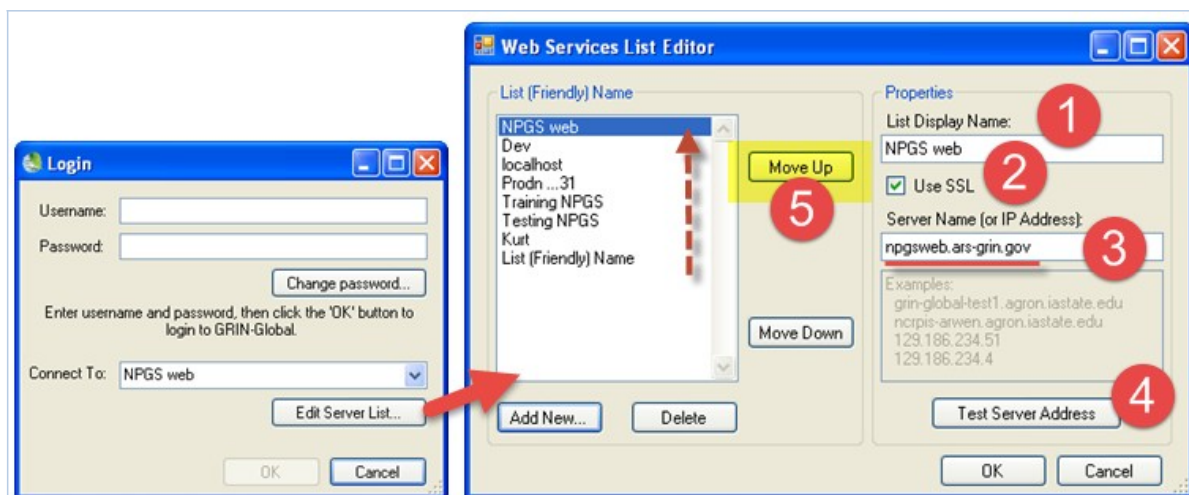
After the CT has been successfully installed, start the CT and establish a connection to the correct server.

For NPGS, the server name is: **npgsweb.ars-grin.gov**

Start the CT from the Windows **Start** Button; click on **GRIN-Global**; click **GRIN-Global Curator Tool**:



When the Curator Tool starts running, its Login Screen will display. You should immediately click on the **Edit Server List** button:

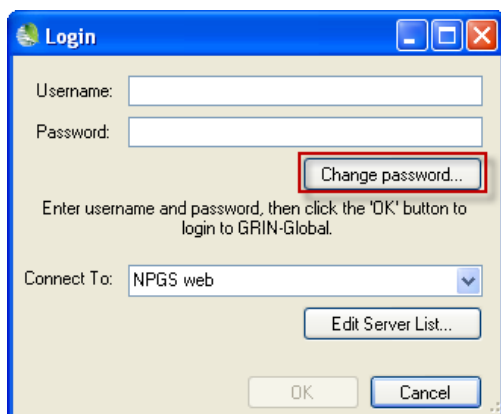


The window has the title **Web Services List Editor**.

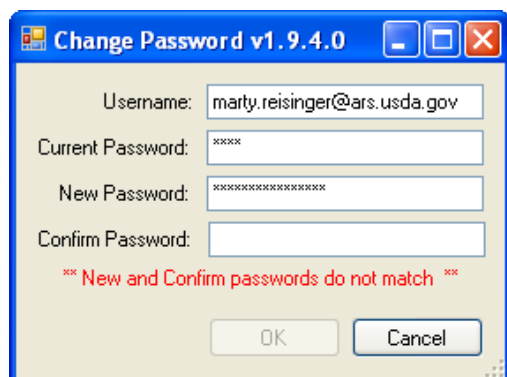
Steps	Description
1.	Input a name that you will recognize – this name will display on the Connect to box on the Login window.
2.	Check the SSL box
3.	Input server name: npgsweb.ars-grin.gov
4.	Click the Test Server Address button – you should receive a positive confirmation that the connection was successful
5.	You may have additional server names listed in the left box – use the Move Up button to have this npgsweb server be listed first (therefore becoming the default server)

Change Password

In NPGS, your **Username** is your complete email address. Click the **Change password...** button. Change it to USDA specifications: (12 characters, at least one must uppercase, 1 lowercase, 1 number, and 1 special character.)



As you input the **New Password:**, ignore the warning for “**** New and Confirm passwords do not match ****” until you complete typing the entry for the **Confirm Password:** click **OK**.



NPGS Password Guidelines

Beginning with CT version 1.9.4, the user name is the user’s email address.

Passwords

Passwords must follow the current ARS guidelines:

- 12 characters minimum
- at least one of each are required: upper case, lower case, digit, and special character
- passwords can change only once per day
- five failed logins initiates a temporary lockout for 15 minutes

If a password is forgotten, the GG administrator must be contacted (to create a new one).

Logging on to the CT



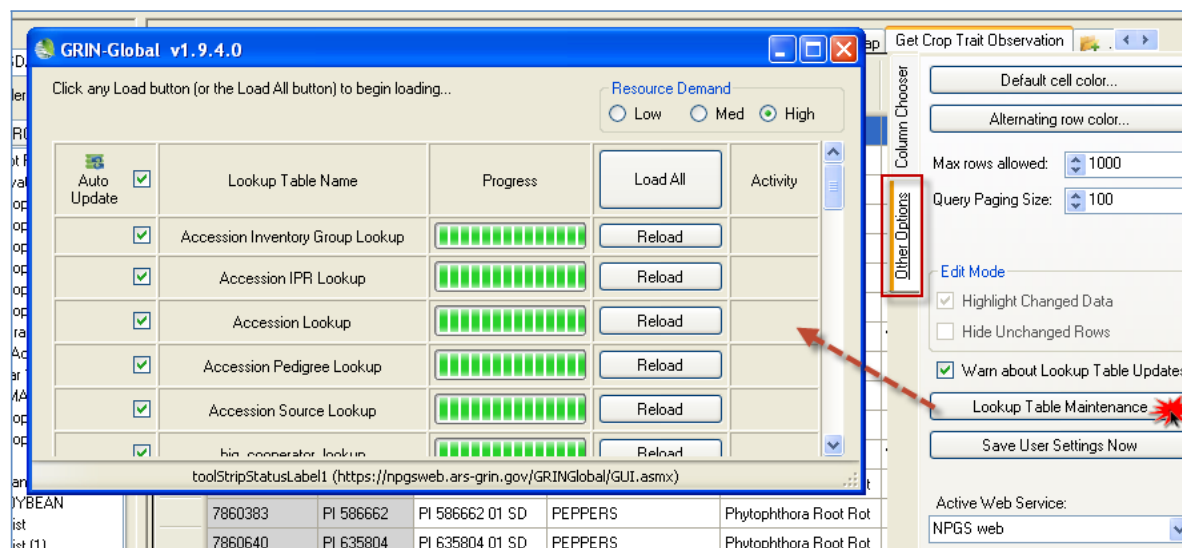
For NPGS, VPN or being on the ARS network is *not* required.

Update Lookup Tables

With any new release of the Curator Tool, during your initial log in you may be prompted to update your lookup tables. Do so. You can momentarily bypass the updating, but this is not recommended. Answer “Yes” to the prompt, and allow the **Lookup Table Loader** window to display. Click the **Load All** button.

In the initial conversion from GRIN to GRIN-Global, you need to Click the **Load All** button **twice**. After the first click, *wait until all of the tables have been updated* in the **Lookup Table Loader** window and then click the Load All button *a second time*.

However, if needed at a later time, click on the **Other Options** tab on the right of the datagrid; click the **Lookup Table Maintenance** button. After the initial loading, it is very rare that you will need to click the **Load All** button again. Avoid clicking that whenever some of the tables are already loaded:

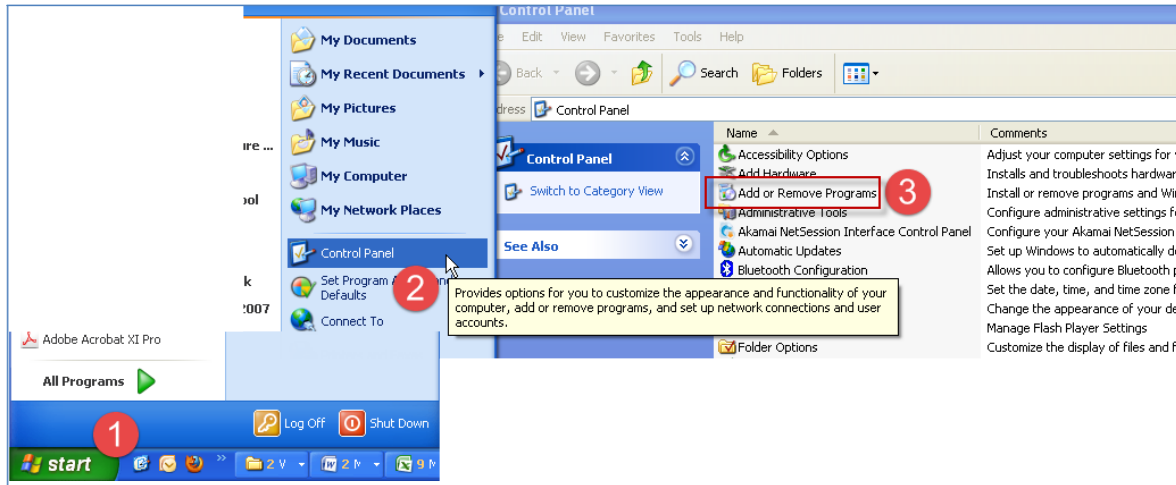


Some of the larger tables may take awhile to load – especially Inventory, Cooperator, and Orders. The time varies, depending on the network traffic and connectivity.

Uninstalling the Existing CT

(CT Versions 1.8.x and older) Use the Windows Control Panel (Recommended option)

Windows XP



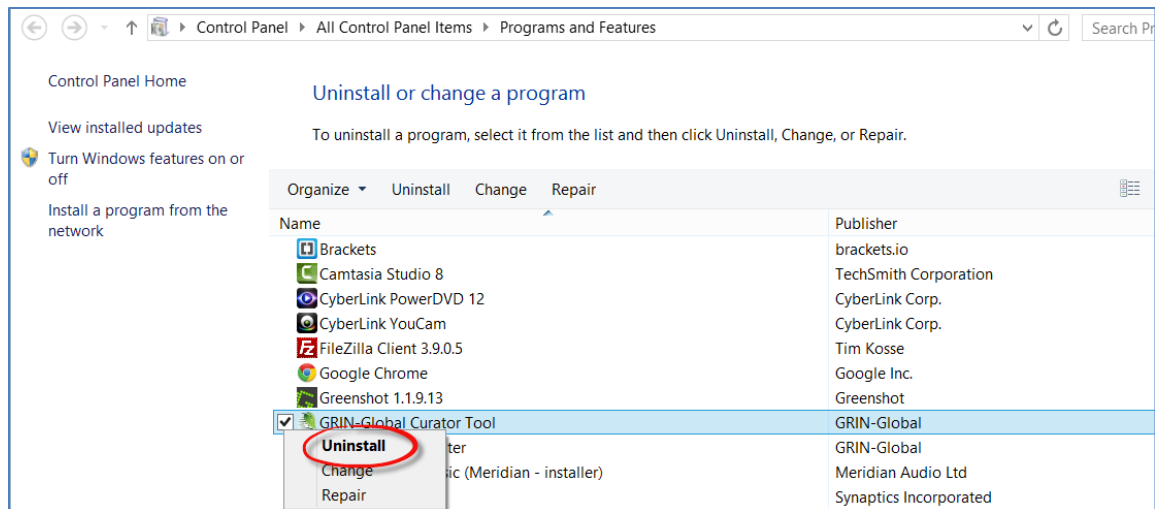
Windows 7

Select **Start | All Programs | Control Panel | Programs and Features**



Windows 8.1

At the Start window, type **Uninstall a program** – locate the GRIN-Global Curator Tool, right-click, and then select **Uninstall**.



APPENDIX: CHANGES IN THIS DOCUMENT

August 23, 2016

- included a note regarding displaying hidden system files in order to display C:\ProgramData

December 2, 2015

- elaborated & edited the NPGS CT installation issues specific to the folder permissions

November 19, 2015

- merged the installation issues and the CT installation guides to include the instructions for the EAD environment
- removed references to “testing” since GG is now being used in production

September 15, 2015

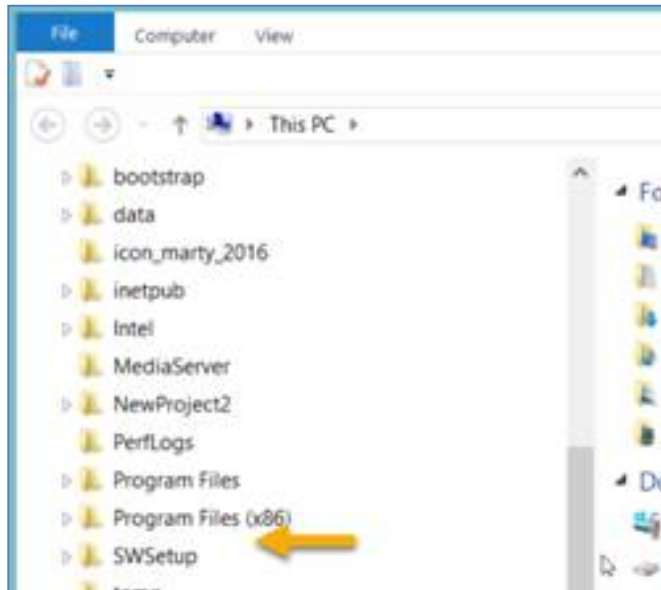
- explanations and directions included because of issues when the user installing the PC does not have Windows administrative privileges to the PC on which the CT is being installed

November 14, 2014

- added additional warnings from 8.1

APPENDIX: CHANGING VIEWING OPTIONS FOR FOLDERS

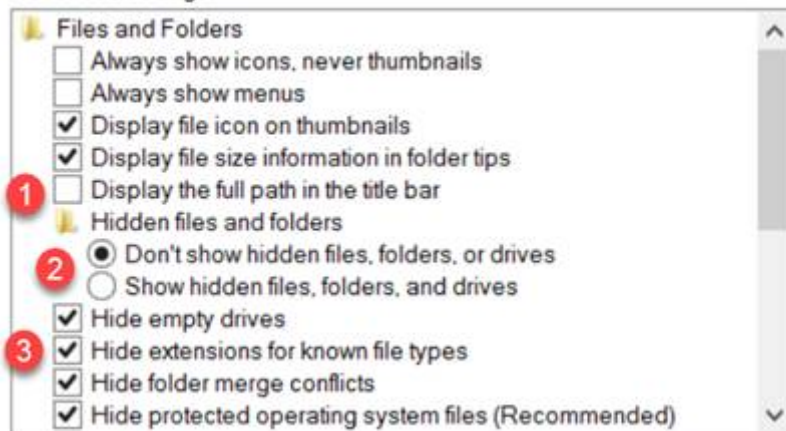
Unfortunately, in its wisdom, Microsoft a long time ago decided to hide certain folders as well as file extensions. The default view; the folder **C:\ProgramData** is hidden:



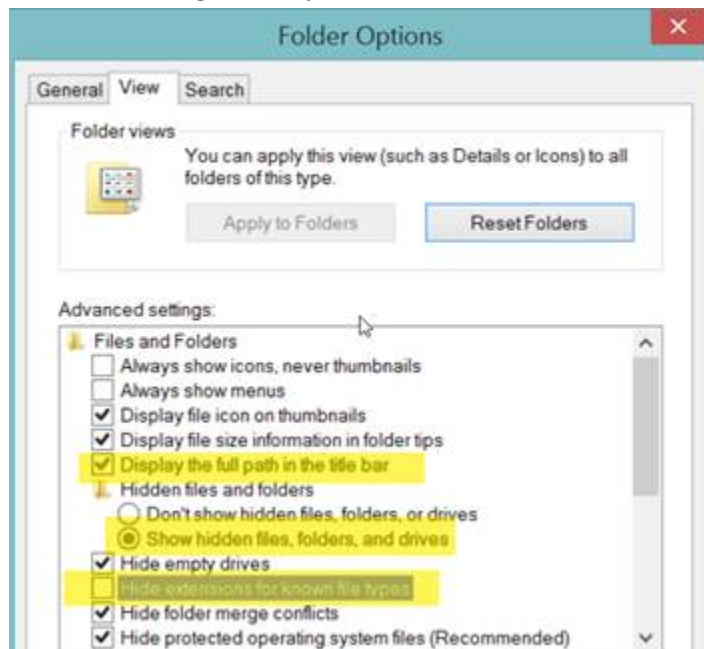
Whenever I get a new PC, I immediately change 3 of the default settings. I use File Explorer extensively, so I change the settings for "**Display full path**," "**Show hidden files...**," and "**Hide extensions for known types**" to be able to see "hidden" folders and files.

Default:

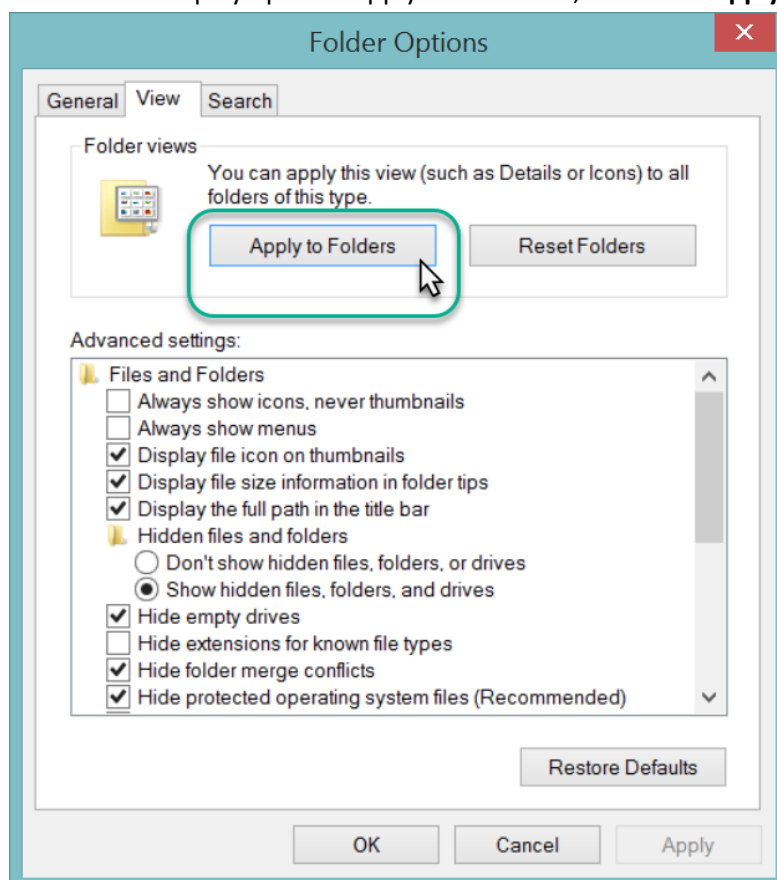
Advanced settings:



Preferred settings which you can make the default for the entire PC:



To make the display options apply to all folders, select the **Apply to Folders** button:



Now C:\ProgramData will display. You may need to close File Explorer window and then reopen it.

