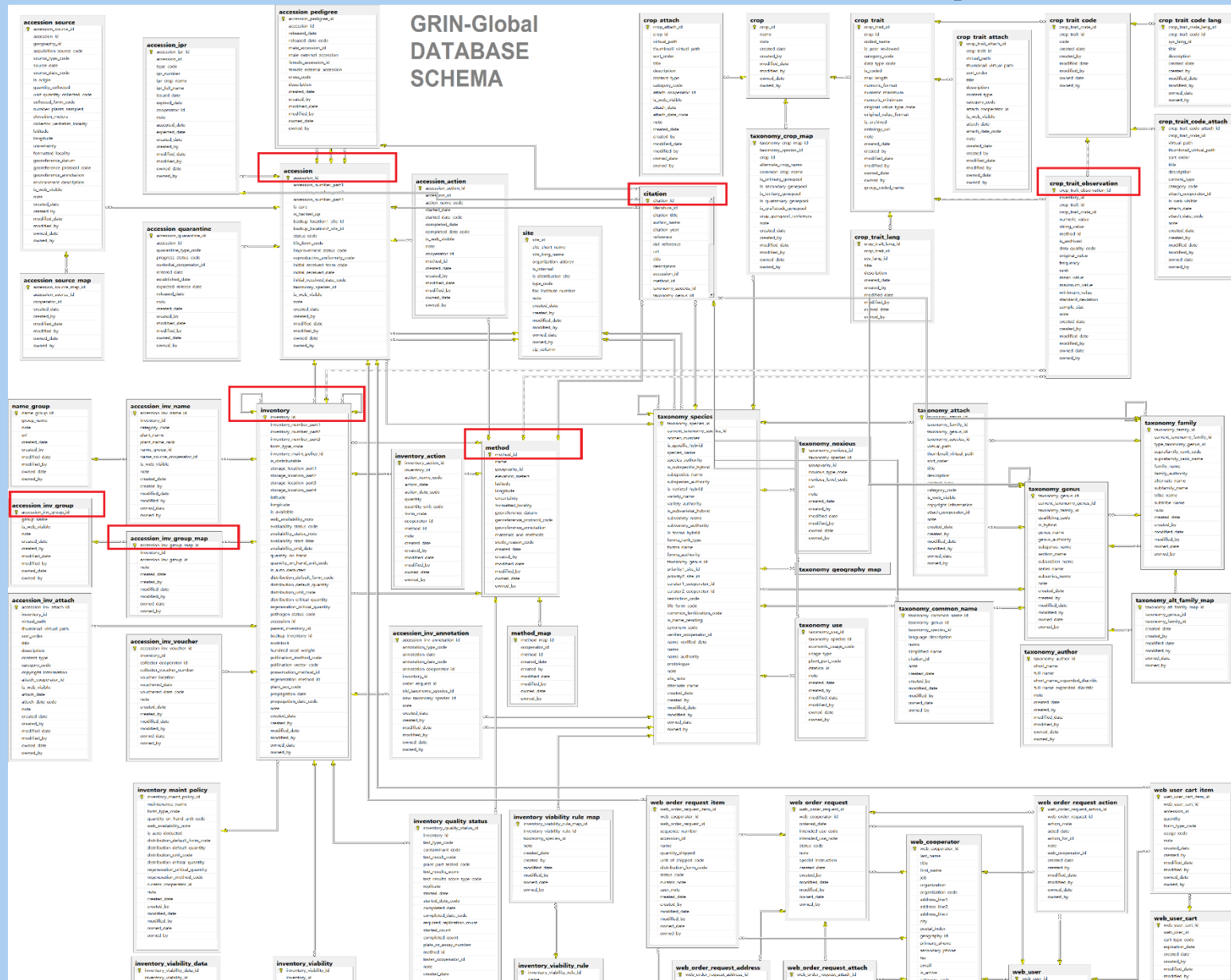


# GRIN-Global Dataviews

You will become familiar with:

- **The organization of GRIN-Global data into relational tables**
- **Curator Tool Dataviews**

# GRIN-Global – Many Tables



# Dataviews

Dataviews are used to retrieve and display the data

The dataview's pre-defined criteria...

Is used to select records from the many tables

# GG Dataviews

- Very customizable
- Created as needed by the organization
- Designed to meet users' specific needs

# Dataview Example

GRIN-Global v1.9.8.30

File Tools Help

Search... Accession Wizard Cooperator Wizard Easy SMTA Wizard Inventory Attachment Wizard Order Wizard Viability Wizard

Show lists from: ☐ Show All  
Reisinger, Martin A., Reisinger Resc v

☐ Include Sub-Folders

Elderberry HOPS Rice

- F Accs
- Core Accessions
  - PI\_159720
  - PI\_159703
  - PI\_159697
  - PI\_159453
  - PI\_157895

Accessions Get Accession Inventory Name Get Accession Source Get Accession Source Cooperator Inventory Get Inventory Maintenance Polic

	Accession ID	Accession Prefix	Accession Number	Accession Suffix	Taxon	Is Web Visible?	Note	Accession
	1010074	F	925		Oryza brachyantha	Y		F 925
	1137092	PI	154662		Oryza sativa	Y		PI 154
	1345287	PI	450351		Oryza glaberrima	Y		PI 450
	1098532	Q	29681		Oryza glaberrima	Y		Q 296
	1134127	PI	133005		Oryza sativa	Y		PI 133
	1345264	PI	450328		Oryza glaberrima	Y		PI 450

Column Chooser Other Options

Accessions

Inventory

W6 Site Inventory

Orders

Order Request Item

Accession Source

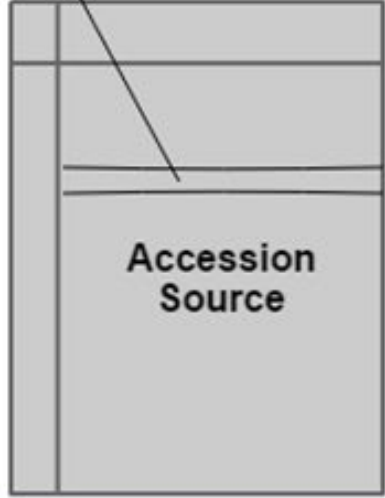
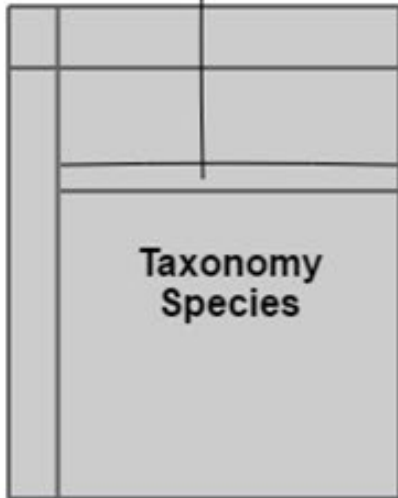
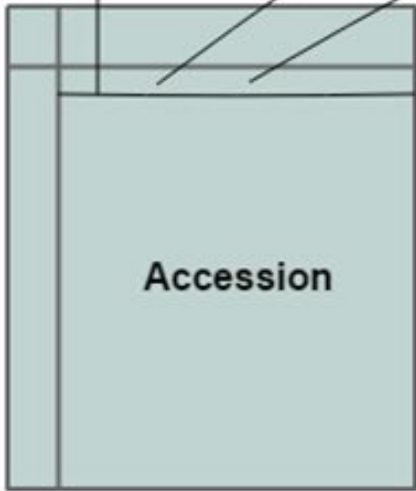
Get Geography

Get Crop Trait

Get Crop Trait Observation

...

Accession ID	Accession Prefix	Accession Number	Accession Suffix	Taxon	Name	Origin	Maintenance Site	Is C
1964734	MAR	9		Humulus lupulus	Merlot 567	Czech Republic, Central Bohemia	NC7	N



# How Many Dataviews in GG?

The screenshot displays the GRIN-Global v1.8.33.0 application interface. At the top, a navigation bar includes tabs for 'Accessions', 'Inventory', 'Orders', 'Cooperators', 'Citation', and 'Accession Source'. A red starburst icon is positioned over the 'Accession Source' tab. Below the navigation bar is a table with the following columns: Accession ID, Accession Prefix, Accession Number, Accession Suffix, Taxon, Name, and Geography. The first row of data shows: 1021717, Ames, 2745, Helianthus tubero..., TUB-1798, and United States, South D.

A red dashed arrow points from the 'Taxon' column header to a dialog box titled 'GRIN-Global v1.8.33.0'. The dialog box contains the following fields and options:

- Dataview Tab Name:** A text input field.
- Dataview Category:** A dropdown menu with 'Client' selected.
- Dataview Area:** A dropdown menu with 'Inventory' selected.
- Dataview:** A list box containing the following items:
  - Get GSPI Site Inventory
  - Get Inventory Action
  - Get Inventory Maintenance Policy
  - Get Inventory Quality Status
  - Get Inventory Viability
  - Get Inventory Viability Rule
  - Get NC7 Site Inventory
  - Get NE9 Site Inventory

# Dataviews are Grouped by Area

Data View Properties v1.9.6.33

Dataview Tab Name:

Dataview

Category:

Area:

Dataview:

Viewer Style

☒ Spreadsheet ☐ Form

Form:

Accession  
Accession/Inventory  
Citation  
Code  
Cooperator  
Crop  
Genetic  
Geographic  
Inventory  
Method  
Order  
Other  
Source/Habitat  
System  
Taxonomy

- **Dataview Dictionary**

**Use the dictionary's dataview list tab to show the Category, Area, etc.**



- - the end -