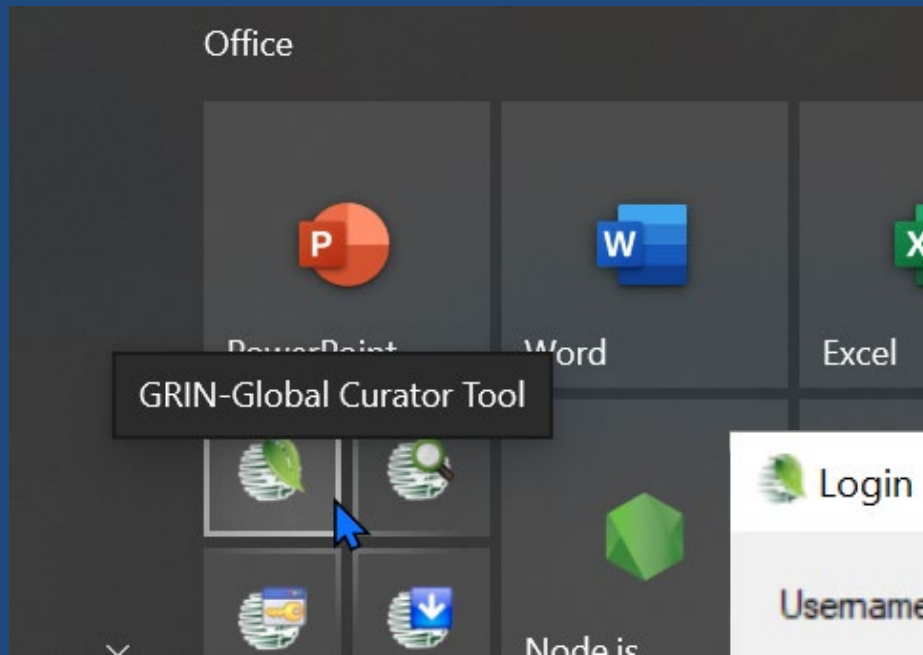


Logging In

Curator Tool

Requires

- UserName
- Password



Login

Username:

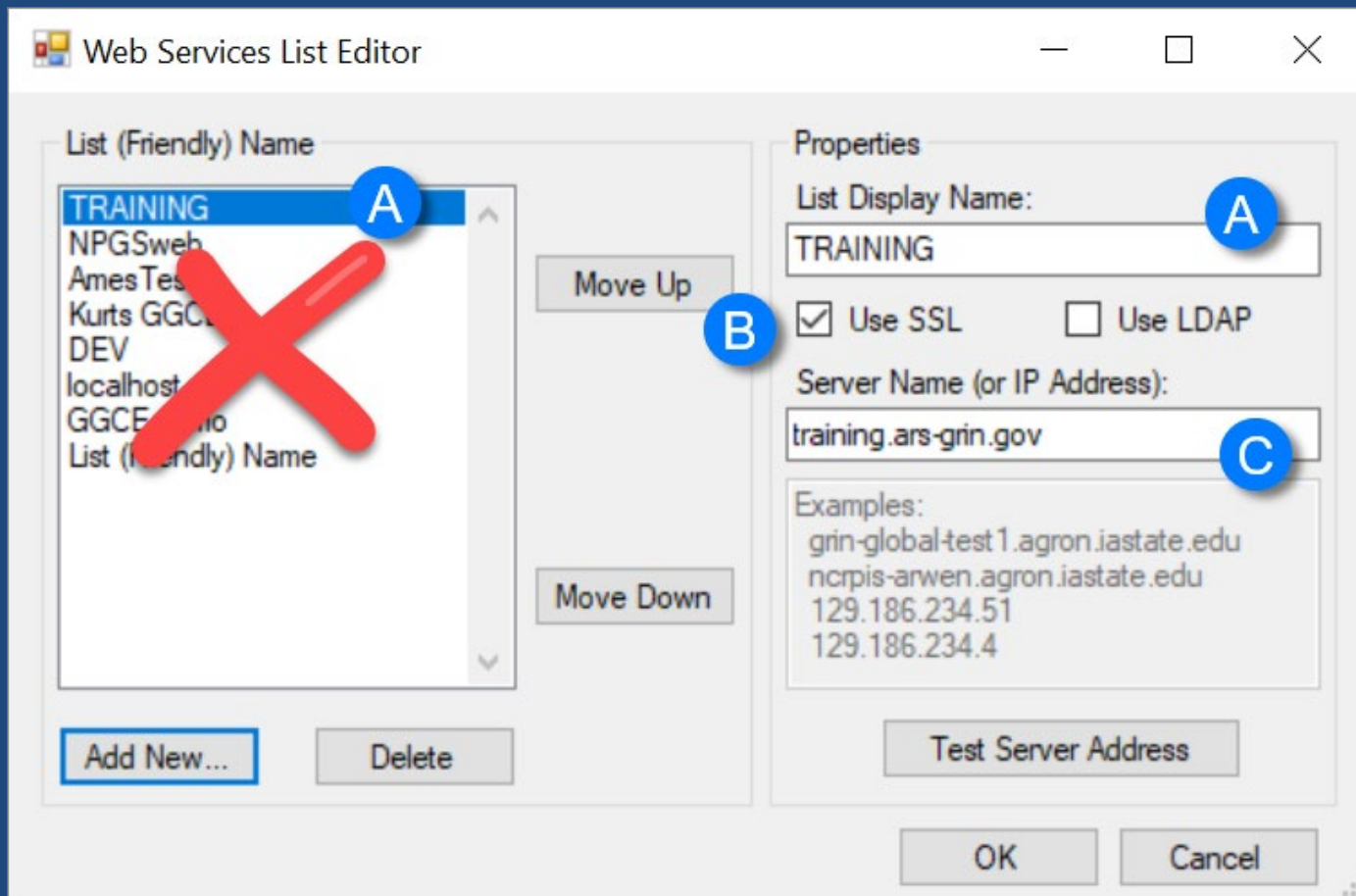
Password:

Enter username and password, then click the 'OK' button to login to GRIN-Global.

Connect To:

Connect To:

Your genebank's GG database





Search...



Accession Wizard



Attachment Wizard



Cooperator Wizard



Order Wizard



Viability Wizard

Show lists from:

 Show All

er, Martin A., Reisinger Resource Group, Inc. ▾

 Include Sub-Folders

Tab 1

Demo



...

- [-] Demo Root Folder
 - 00_EMPTY
 - Humulus
 - Jan-July
 - [+] Marty's Stuff
 - [+] New List (1)
 - [+] New List (3)
 - [+] ONE RECORD EX

Site	Accessions	Inventory	Orders	Cooperators	Accession Source	Accession Source Cooperator	A
Site ID	Site Short Name	Site Long Name	Provider Identifier	Organization Abbreviation			
1	COT	Cotton Collection					COT
2	BRW	Natl. Germplasm Repository - Bro...					BRW
3	COR	Natl. Germplasm Repository - Cor...					COR
4	DAV	Natl. Germplasm Repository - Davis					DAV
5	GEN	Natl. Germplasm Repository - Ge...					GEN
6	HILO	Natl. Germplasm Repository - Hilo					HILO
7	MAY	Natl. Germplasm Repository - Ma...					MAY